



Figure 1: Picture of the 10m mast located at the CIBA site, with instrumentation at different levels.

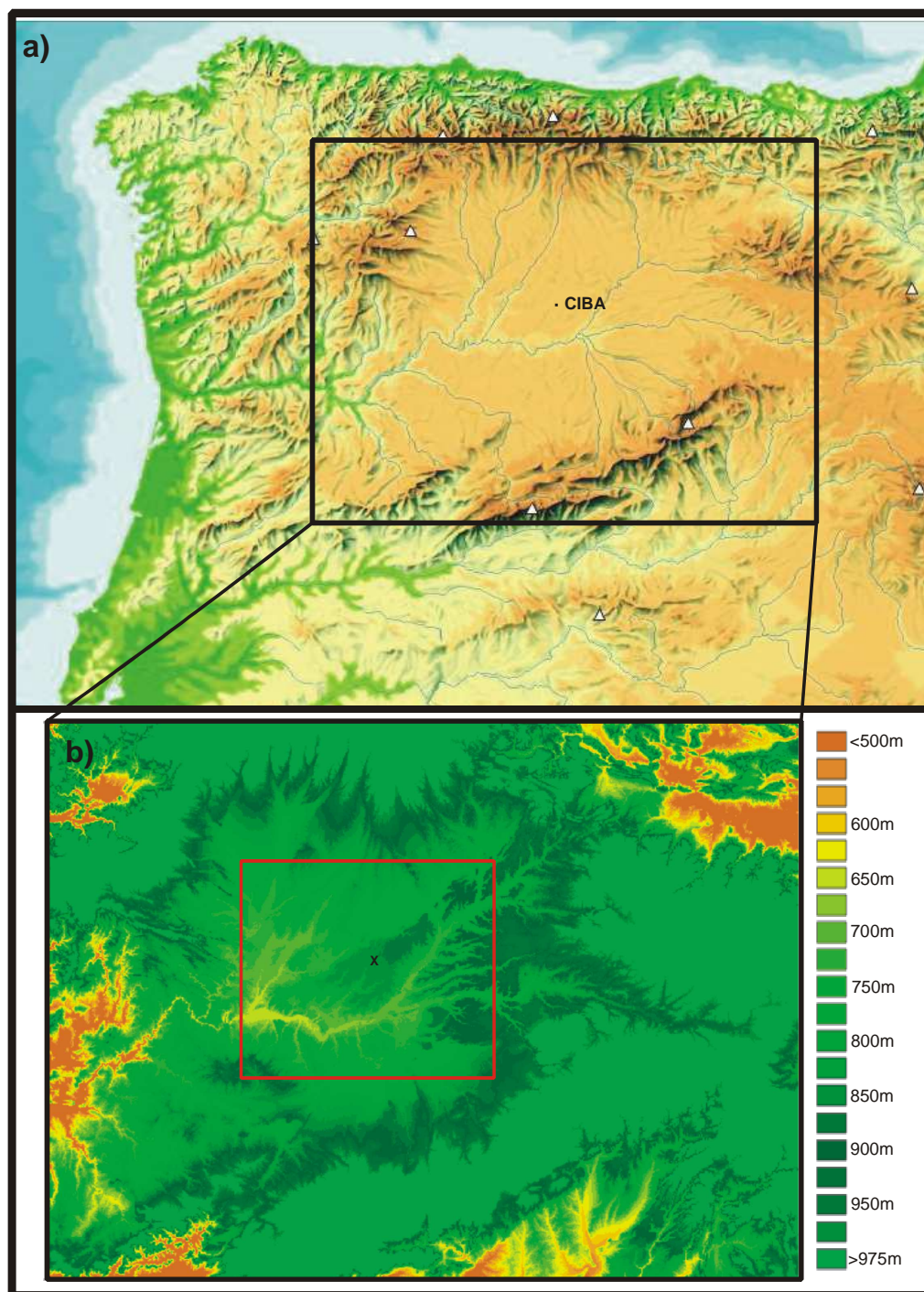


Figure 2: a) Location of the CIBA site in the Iberian Peninsula. b) Topographic map of the previous selected black rectangle.

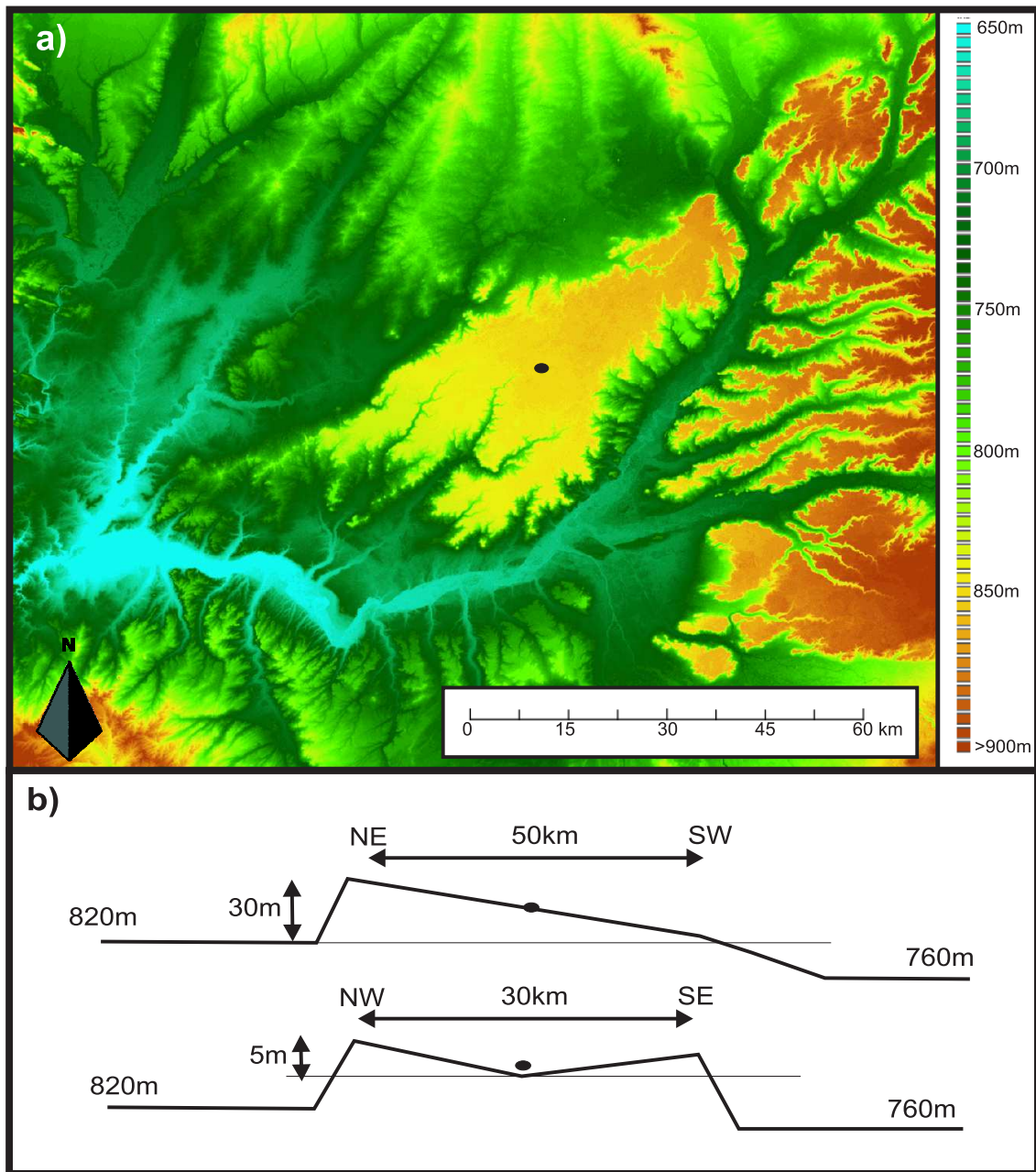


Figure 3: a) Topographic map of the area in the red rectangle in Fig. 2b. b) Schematic drawing of the small slopes at the CIBA.